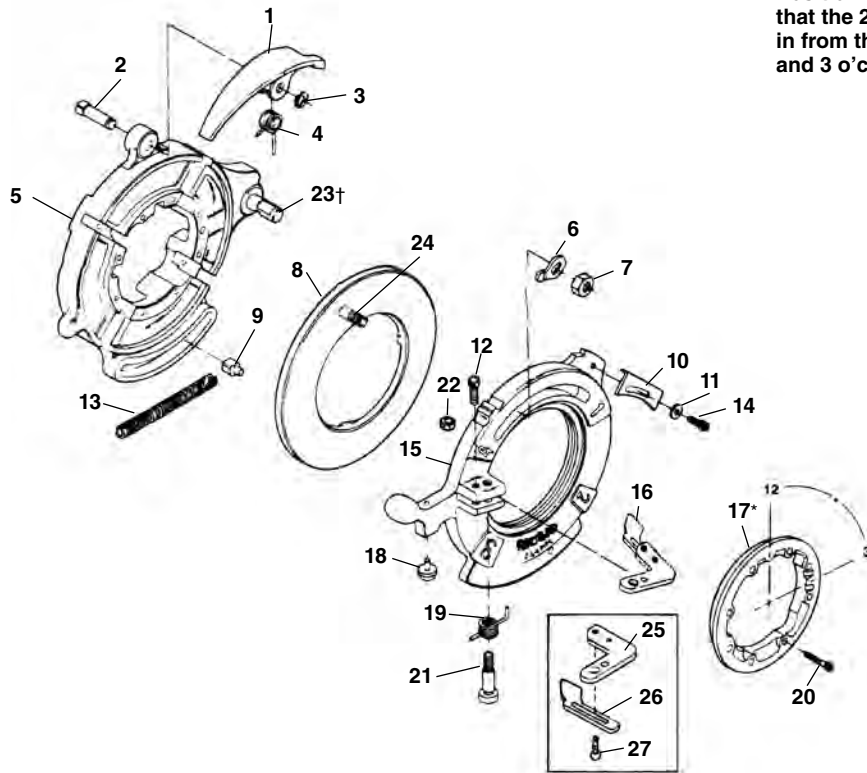


**Nos. 714 & 914 Self-Opening  
Receding Die Heads**



**\*Position Retaining Ring so that the 2 blind holes coming in from the rear are in the 12 and 3 o'clock positions.**

**NOTE: Order parts by Catalog Number only.  
DO NOT order by Reference Number.**

| Ref. No. | Catalog No. | Description  | Ref. No. | Catalog No. | Description                        |
|----------|-------------|--|----------|-------------|------------------------------------|
| —        | 26152       | 714 Self-Opening Receding Die Head (NPT)                       | 12       | 27357       | Screw 1/4" - 20 x 7/8"             |
| —        | 26157       | 914 Self-Opening Receding Die Head (BSPT)                      | 13       | 26612       | Drive Block Spring                 |
| —        | 41387       | 914 Self-Opening Receding Die Head (BSPT) w/Adjustable Trigger | 14       | 32145       | Screw 1/4" - 20 x 1/2"             |
| 1        | 26877       | Release Lever  | 15       | 26882       | Cam Locking Plate                  |
| 2        | 26932       | Groove Pin   | 16       | 26617       | Release Foot (NPT)                 |
| 3        | 26937       | Retaining Ring   |          | 32507       | Release Foot (BSPT)                |
| 4        | 26872       | Spring   |          | 32977       | Adjustable Release Foot            |
| 5        | 26712       | Die Head w/Post  | *17      | 26637       | Retaining Ring                     |
| 6        | 26957       | Lever Washer   | 18       | 26962       | Sine Bar Ball                      |
| 7        | 26887       | Hex Nut 7/16" - 20   | 19       | 26622       | Torsion Spring                     |
| 8        | 26952       | Cam Assy. (NPT)  | 20       | 26642       | Screw #10 - 32 x 1 3/8" (8)        |
|          | 27277       | Cam Assy. (BSPT)   | 21       | 26627       | Shoulder Bolt                      |
| 9        | 26632       | Drive Block  | 22       | 77710       | Hex Nut 1/4" - 20                  |
| 10       | 26867       | Lockout Plate  | †23      | 59827       | Post                               |
| 11       | 27097       | Washer 9/32"   | 24       | 33227       | Cam Bolt                           |
|          |             |  | 25       | 39992       | Release Foot Pivot                 |
|          |             |  | 26       | 39987       | Release Foot (BSPT)                |
|          |             |  | 27       | 32205       | Screw                              |
|          |             |  | 28       | 10673       | Ball Detente Assy. (4) (Not Shown) |

† - See Service Notes